



December 2024 PKGT Monitoring Summary Report

The following Port Kembla Grain Terminal (PKGT) monthly monitoring summary report has been prepared by GrainCorp in accordance with Section 66 of the *Pollution of the Environment Operations Act 1997*. Monitoring data shared with the public on the website includes that collected as part of the Environmental Protection Licence (EPL) for the Port Kembla Grain Terminal Site. Monthly monitoring summaries are completed on the last day of any given month for the data collected.

Report contents

Section A. Map of PKGT and the location of sampling points as per the Environmental Protection Licence

Section B. PKGT fumigation emissions monitoring (Sampling Points 3,4,5,6,7 and 8)

Section C. PKGT interceptor water monitoring (Sampling Point 1)

Section D. PKGT diesel boiler monitoring (Sampling Point 2)

| | | |
|--|--|---|
| Monitoring triggered in this period and summarised in report? | <input checked="" type="checkbox"/> Yes see Section B | <input type="checkbox"/> No has not been included in report |
| | <input checked="" type="checkbox"/> Yes see Section C | <input type="checkbox"/> No has not been included in report |
| | <input type="checkbox"/> Yes see Section D | <input checked="" type="checkbox"/> No has not been included in report |
| | | |

Site details

| | |
|---------------------------------|---|
| EPL Number | 3693 |
| Licensee Name | GrainCorp Operations Limited |
| Address | Port Kembla Grain Terminal, Morton Way, Port Kembla NSW 2505 |
| EPL Public Register Link | http://www.epa.nsw.gov.au/prpoeoapp/Detail.aspx?instid=3693&id=3693&option=licence&searchrange=licence&range=PEO licence&prp=no&status=Issued |

Technical Reviewer

M. Anderton

Name

20/01/2025

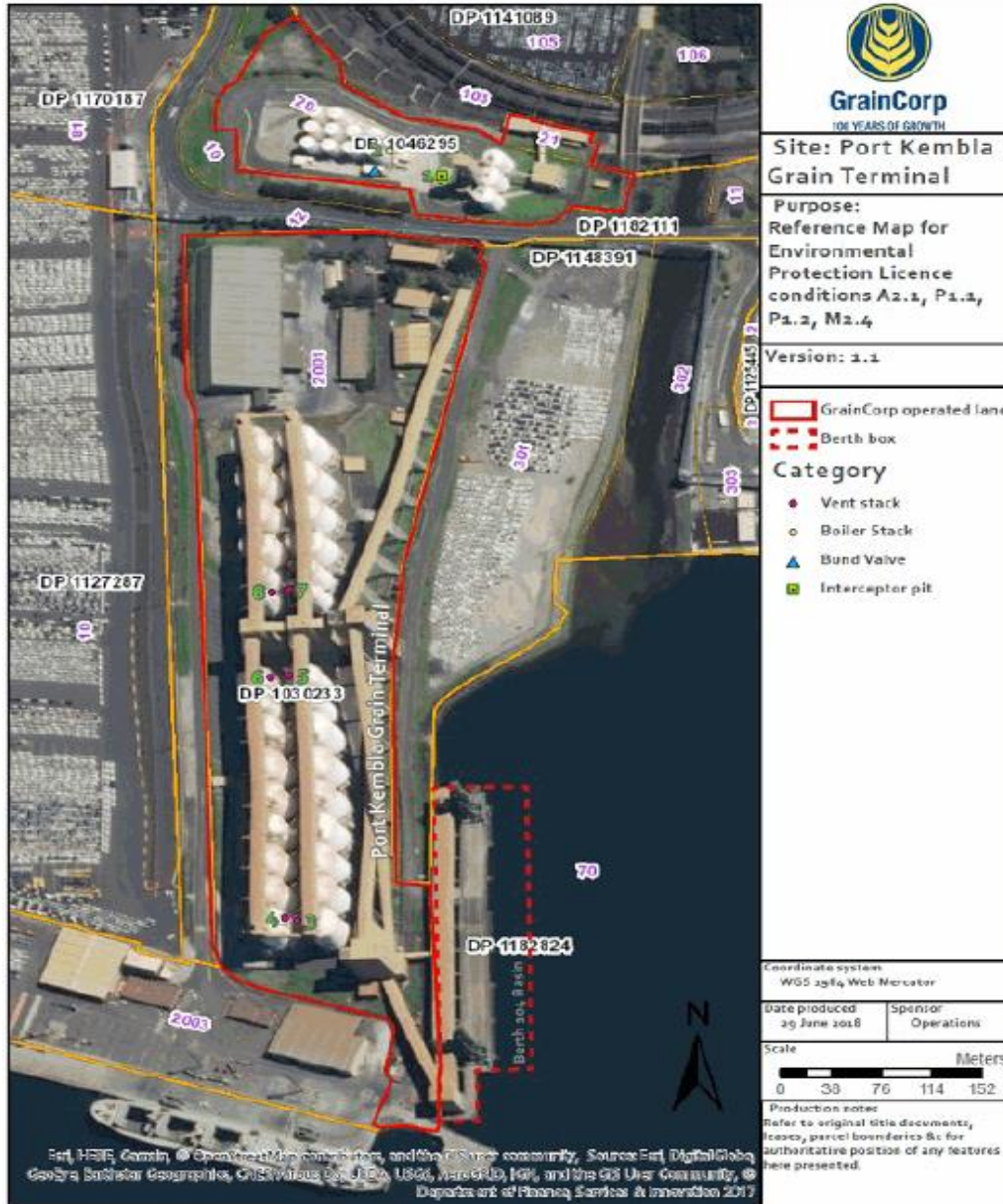
Date

Date published to website

20/01/2025

Date

B. GrainCorp - Port Kembla Fumigation monitoring data summary: December 2024 PKGT Monitoring Summary Report



Environment Protection Licence (EPL) Monitoring Locations

| Point | Location at PKGT |
|---------|---|
| 1 | Located at the Bulk Liquid Storage area of the Port Kembla Grain Terminal. The water sample is collected downstream the bund valve from the final section of the interceptor. |
| 2 | Diesel boiler air vent located within the bulk liquid storage area directly east of the bulk storage tank area bund. |
| 3 and 4 | Most southern fumigation vents located beside silos A1 and B1. |
| 5 and 6 | Fumigation vent located in the centre of the site beside silos A9 and B9. |
| 7 and 8 | The northern most fumigation vents located beside silos A10 and B10, just north of points 5 and 6. |

#

#

B. GrainCorp - Port Kembla Fumigation monitoring data summary: December 2024

All air monitoring has been conducted in accordance with the methodology prescribed or a methodology approved in writing with NSW EPA.

Monitoring frequency: Continuous during every ventilation

No. of ventilation events during month: 3

| Sampling date (ventilation event) | Pollutant (discharged to air) | Silo Vent No. | Initial Purge start time [^] | Initial Purge end time* | Exceedance | Sampler (fumigator) | Parameter | Result | | Limit | Units of measure | Monitoring point location | Exceedance (yes/no) | |
|--------------------------------------|--------------------------------------|---------------|---------------------------------------|-------------------------|--|---------------------|---------------|---------------|------------|----------------------------|-------------------|---------------------------|---------------------|--|
| | | | | | More than one silo vent in initial purge phase?*(yes/no) | | | Min. value | Max. value | 100 percentile (allowable) | | | | |
| 11/12/2024 | <i>Single silo ventilation event</i> | | | | | | | | | | | | | |
| | Methyl Bromide | B13 | 11:38 | n/a | no | R.Newton | Concentration | NA | 5.4186 | 8 | grams per second | 8 | no | |
| | | | | | | | Velocity | 1.54 | NA | 1.4 | metres per second | | no | |
| | <i>Second silo ventilation event</i> | | | | | | | | | | | | | |
| | No discharge occurred | | | | | | | Concentration | NA | | - | grams per second | - | |
| | | | | | | | | Velocity | | NA | - | metres per second | | |
| 18/12/2024 | <i>Single silo ventilation event</i> | | | | | | | | | | | | | |
| | Methyl Bromide | A15 | 16:43 | n/a | no | R.Newton | Concentration | NA | 6.675 | 8 | grams per second | 7 | no | |
| | | | | | | | Velocity | 1.5 | NA | 1.4 | metres per second | | no | |
| | <i>Second silo ventilation event</i> | | | | | | | | | | | | | |
| | No discharge occurred | | | | | | | Concentration | NA | | - | grams per second | - | |
| | | | | | | | | Velocity | | NA | - | metres per second | | |
| 20/12/2024 | <i>Single silo ventilation event</i> | | | | | | | | | | | | | |
| | Phosphine | B3 | 14:47 | n/a | no | R.Newton | Concentration | NA | 0.0376 | 0.0424 | grams per second | 6 | no | |
| | | | | | | | Velocity | 0.65 | NA | 0.5 | metres per second | | no | |
| | <i>Second silo ventilation event</i> | | | | | | | | | | | | | |
| | No discharge occurred | | | | | | | Concentration | NA | | - | grams per second | - | |
| | | | | | | | | Velocity | | NA | - | metres per second | | |

B. GrainCorp - Port Kembla Fumigation monitoring data summary: December 2024

All air monitoring has been conducted in accordance with the methodology prescribed or a methodology approved in writing with NSW EPA.

Monitoring frequency: Continuous during every ventilation

No. of ventilation events during month: 3

| Sampling date (ventilation event) | Pollutant (discharged to air) | Silo Vent No. | Initial Purge start time^ | Initial Purge end time* | Exceedance | Sampler (fumigator) | Parameter | Result | | Limit | Units of measure | Monitoring point location | Exceedance (yes/no) |
|--------------------------------------|-------------------------------|------------------|------------------------------|----------------------------|---|---------------------|-----------|------------|------------|-------------------------------|---------------------|---------------------------------|---------------------|
| | | | | | More than one silo vent in initial purge phase?* (yes/no) | | | Min. value | Max. value | 100 percentile (allowable) | | | |
| | | | | | | | | | | | | | |

B. GrainCorp - Port Kembla Fumigation monitoring data summary: December 2024

The concentration of each pollutant specified below has been determined using the required sampling method, units of measure and sample frequency specified in the EPL. Water parameters and water samples are collected by suitably qualified staff and, where required, water samples are analysed at a NATA accredited laboratory.

Monitoring frequency: Single sample each day during any discharge (i.e. daily)

Number of water release events during month: 2

Monitoring Point Location: Point 1

| Number of times measured/sampled during month | Pollutant (discharge to water) | Result | | Visible or not visible? | Limit | Units of measure | Exceedance (yes/no) |
|---|--------------------------------|------------|------------|-------------------------|----------------------------|------------------|---------------------|
| | | Min. value | Max. value | | 100 percentile (allowable) | | |
| 2 | Oil and Grease | NA | NA | Not Visible | Not visible | Visible | no |
| | pH | 6.42 | 8.15 | NA | 6.5-8.5 | R.Newton | no |
| | Total suspended solids | <5 | 18 | | 50 | mg/L | no |
| | Turbidity | 1.2 | 1.5 | | 40 | NTU | no |

| Sampling Event details | | | |
|------------------------|---------|-----------------|---------------|
| Sampling date | Sampler | Lab report date | Lab report ID |
| 1/12/2024 | B.Lowe | | |
| 2/12/2024 | B.Lowe | 9/12/2024 | EW2405543 |
| | | | |

| Unit of Measure Abbreviation | Unit of Measure |
|------------------------------|-------------------------------|
| mg/L | milligrams per litre |
| pH | pH |
| R.Newton | Visible |
| mg/L | nephelometric turbidity units |

D. GrainCorp - Port Kembla boiler air monitoring summary: January 1900

The concentration of each pollutant specified below has been determined using the required sampling method, units of measure and sample frequency specified in the EPL. Sampling is completed annually by an external NATA accredited specialist and standardised where required.

EPL period monitored/number of samples required by EPL: On commission and annually thereafter within anniversary period of licence. One sample is collected during monitoring.

Monitoring Point Location: Point 2

Sampling date: 9/07/2021

| Pollutant (discharge to air) | Result | | | Limit | Unit of Measure | Exceedance (yes/no) |
|------------------------------|------------|-------|------------|--|-------------------|---------------------|
| | Min. Value | Mean | Max. Value | 100 Percentile (allowable) (mg/m ³) | | |
| Carbon monoxide | 180 | 17 | 230 | 125 | mg/m ³ | No |
| Moisture | 5.8 | 5.8 | 5.8 | | % | NA |
| Nitrogen Oxides | 180 | 210 | 230 | 250 | mg/m ³ | No |
| Oxygen (O ₂) | 8.3 | 9 | 9.9 | | % | NA |
| Solid Particles | <2 | <2 | <2 | 50 | mg/m ³ | No |
| Sulphur dioxide | 0.058 | 0.058 | 0.058 | 1.5 | mg/m ³ | No |
| Temperature | 224 | 224 | 224 | | °C | NA |
| Velocity | 6.5 | 6.5 | 6.5 | | m/s | NA |
| Volumetric flowrate | 0.1 | 0.1 | 0.1 | | m ³ /s | NA |

| Unit of Measure Abbreviation | Unit of Measure |
|------------------------------|----------------------------|
| °C | degrees Celsius |
| µg/m ³ | micrograms per cubic metre |
| m/s | metres per second |
| mg/m ³ | milligrams per cubic metre |
| % | percent |